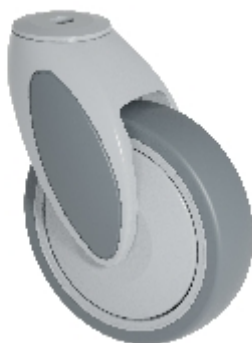









Lenkrolle:

KSL2-51C-L12 (VIVAX 2.0)



## Technische Daten

Durchmesser		125 mm
Radbreite		32 mm
Bauhöhe		161 mm
Ausladung		46 mm
Rückenlochdurchmesser		12 mm
Tragkraft		100 kg
Gewicht		470 g

## Technische Beschreibung

Kunststoffrolle

Gabel aus hochfestem schlagzähem Nylon

Lenkgabelkopf mit abgedichtetem Rillenkugellager



## Rad

Polypropylen-Radkörper

thermoplastische Bandage (TPE, Shore A 87)

Fadenschutz

Kugellager

nicht ausölend