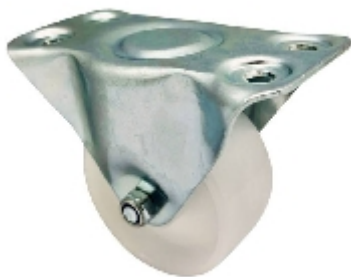


Bockrolle:




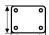
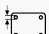
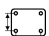


438a 00G065n ZPS

auf Anfrage

RHOMBUS 



## Technische Daten

Durchmesser		65 mm
Laufflächenbreite		33 mm
Bauhöhe		88 mm
Plattengröße		95x54 mm
Schraublochdurchmesser		6,5 mm
Schraublochentfernung		71x24 mm
Tragkraft		100 kg
Gewicht		195 g

## Technische Beschreibung

Stahlblechgehäuse

verzinkt-passiviert

Radachse verschraubt



## Rad

Polypropylen weiß

Gleitlager